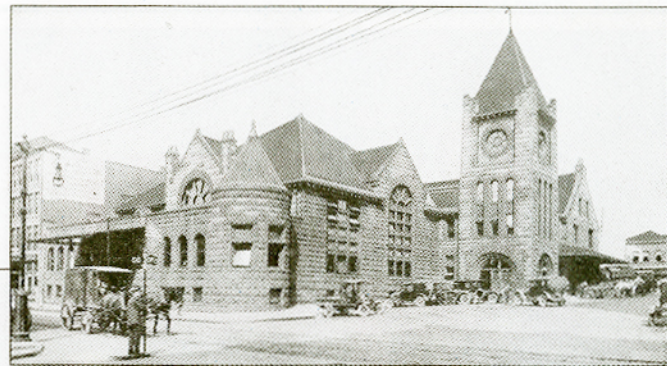


A Look Back...

WHAT ONCE STOOD AT 333 W. WASHINGTON ST.

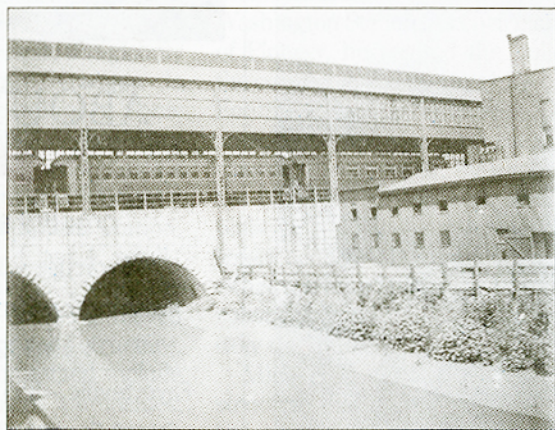
Top right: The actual 1895 NY Central train station that stood on the corner of Franklin and W. Fayette Streets. Properly, this is where the current surface parking lot sits on that corner. The site of the new Washington Station building is technically where the station's train shed and platforms stood.



Center: The Washington Street Railroad Station, circa 1878.



Bottom left: A view of the train shed from Fayette Street. The stone bridge that is visible is still there. Despite the fact that the train shed and station proper were long ago demolished, the underground tunnel that connected the two still existed prior to the start of Pioneer's construction. It dated to 1895. It was how passengers passed from the station waiting room to the train platforms without crossing the tracks.



PHOTOGRAPHS FROM
THE COLLECTION OF THE
ONONDAGA HISTORICAL
ASSOCIATION MUSEUM
& RESEARCH CENTER,
321 MONTGOMERY ST.,
SYRACUSE, NY 13202